



GAT MONTHLY MEMBERSHIP PROGRESS REPORT

Results as of: 5/31/2023

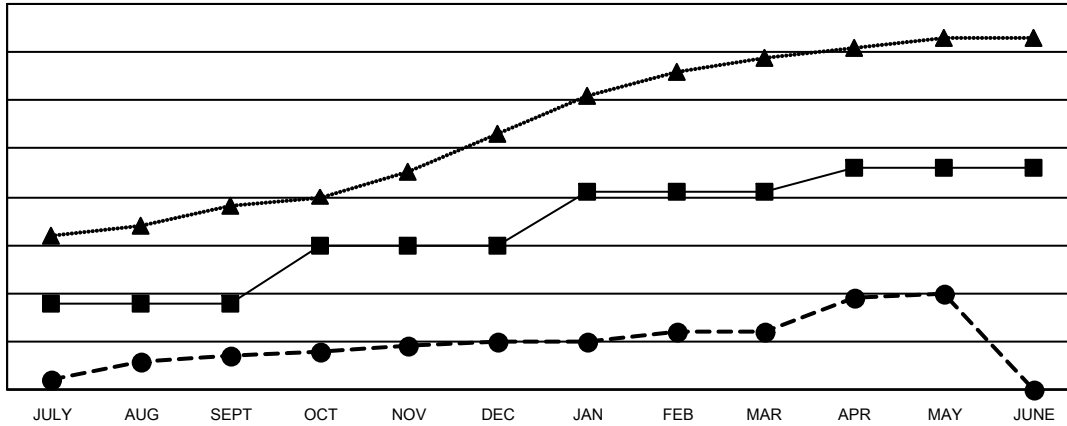
Multiple District 3232

LOCATION: INDIA

Clubs			
RESULTS FOR 2022-2023			
QUARTER	NEW CLUB GOAL	NEW CLUBS	DROPPED CLUBS
JULY/AUG/SEPT	18	7	102
OCT/NOV/DEC	12	3	15
JAN/FEB/MAR	11	2	6
APR/MAY/JUNE	5	8	4

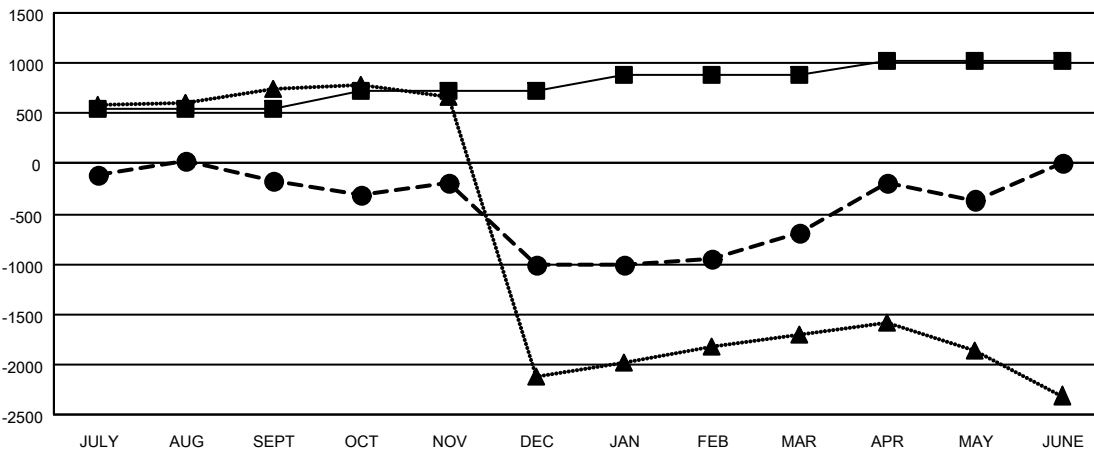
Members			
RESULTS FOR 2022-2023			
QUARTER	MEMBER GROWTH NET GOAL	MEMBER GROWTH ACTUAL	DROPPED MEMBERS ACTUAL (including transfers)
JULY/AUG/SEPT	545	558	658
OCT/NOV/DEC	175	796	1,573
JAN/FEB/MAR	170	506	112
APR/MAY/JUNE	125	838	380

GOALS AND ACTUAL NEW CLUBS CUMULATIVE



- CURRENT YEAR GOALS FOR NEW CLUBS
- CURRENT YEAR ACTUAL NEW CLUBS
- ▲- LAST YEAR ACTUAL NEW CLUBS

GOALS AND ACTUAL MEMBERS CUMULATIVE



- MEMBER GROWTH NET GOAL
- MEMBER GROWTH ACTUAL
- ▲- LAST YEAR MEMBERSHIP ACTUAL

DROPPED CLUBS: 127	314 CLUBS OF 620 ADDED 1 OR MORE NEW MEMBERS	GENDER DISTRIBUTION
DROPPED MEMBERS	CLICK HERE FOR CUMULATIVE MEMBERSHIP DATA	MALE 11,104 (63.09%)
DECEASED 31		FEMALE 6,491 (36.88%)
CLUB CANCELLED 353		NON BINARY 0 (0.00%)
OTHER 2,339		PREFER NOT TO ANSWER 4 (0.02%)
TOTAL 2,723		TOTAL FAMILY UNIT MEMBERS 12,950
		FAMILY MEMBERS PAYING HALF DUES 8,909